

AGENDA

Meeting: BRADFORD ON AVON AREA BOARD
Place: Cereal Partners UK, Staverton, nr Trowbridge, BA14 6GP
Date: Wednesday 20 November 2013
Time: 7.00 pm

Including the Parishes of Limpley Stoke, Winsley, Monkton Farleigh, Bradford-on-Avon, Holt, South Wraxall, Wingfield, Westwood, Staverton

The press and public are invited to attend the meeting

The Area Board welcomes and invites contributions from members of the public

ARRIVE EARLY! Refreshments will be available.

Please direct any enquiries on this agenda to Kevin Fielding, on 01249 706612 or email kevin.fielding@wiltshire.gov.uk or Peter Dunford (Bradford on Avon Community Area Manager), direct line 01225 713060 or (email) peter.dunford@wiltshire.gov.uk

All the papers connected with this meeting are available on the Council's website at www.wiltshire.gov.uk

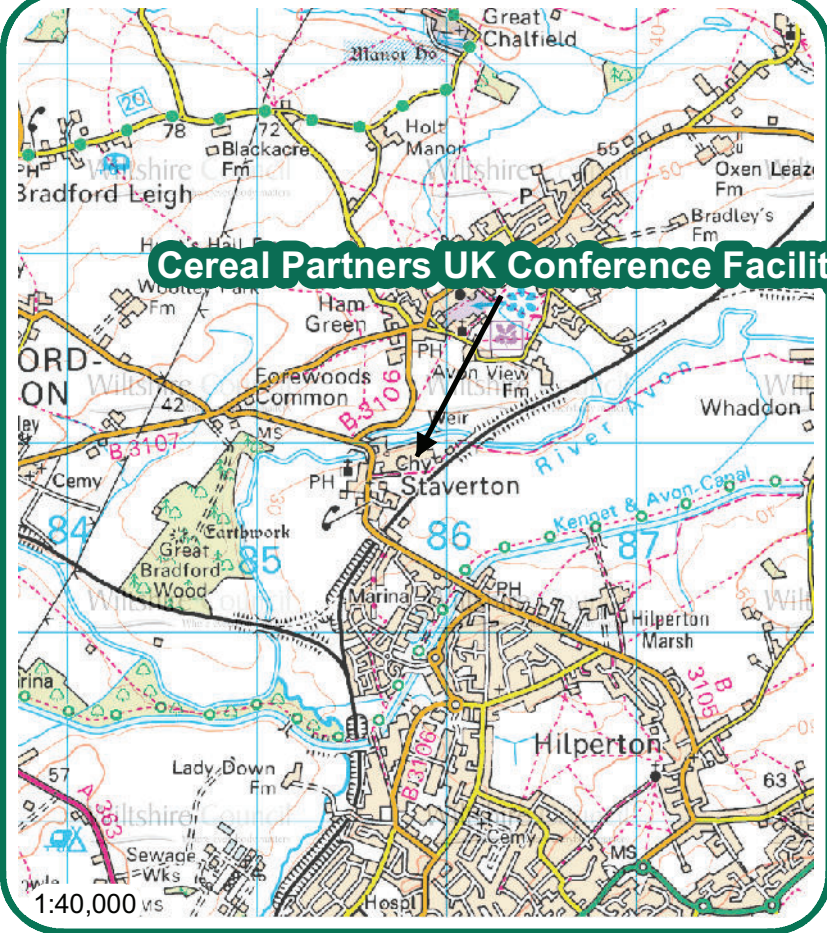
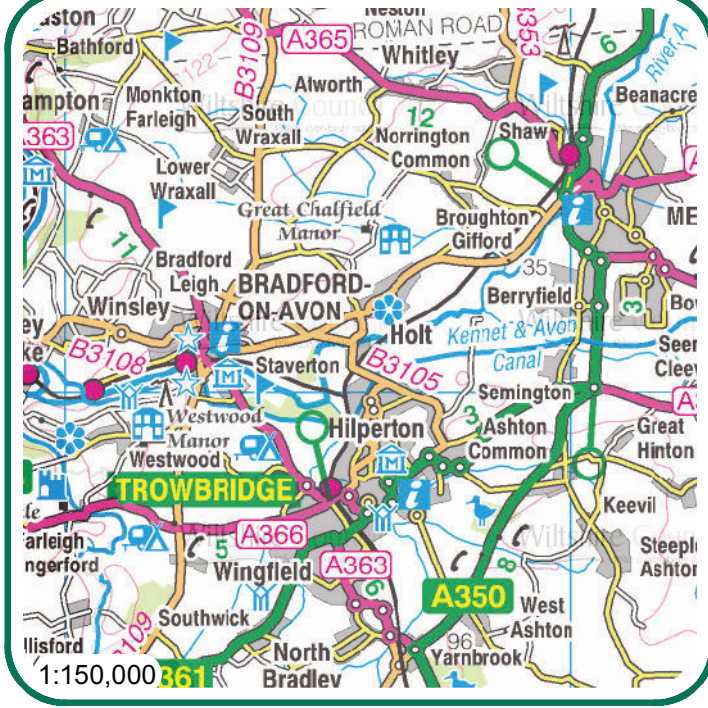
Press enquiries to Communications on direct lines (01225) 713114 / 713115.

Wiltshire Councillors

Cllr Rosemary Brown (Chairman) - Bradford on Avon North	Cllr Magnus Macdonald - Winsley & Westwood
Cllr Trevor Carbin – Holt & Staverton	Cllr Ian Thorn (Vice Chairman) – Bradford on Avon South

Items to be considered	Time
1 Arrival and Refreshment	6.30pm
2 Death of Councillor Linda Conley	7.00pm
3 Chairman's Welcome and Introductions	
4 Apologies for Absence	
5 Declarations of Interest To receive any declarations of disclosable interests or dispensations granted by the Standards Committee.	
6 Minutes (<i>Pages 3 - 6</i>) To approve and sign as a correct record the minutes of the meeting held on the 23 October 2013.	
7 Chairman's Announcements and Updates. (<i>Pages 7 - 18</i>) Announcements: <ul style="list-style-type: none"> i) Carers Small Grants Scheme ii) State of the Environment Report 2013 iii) Bradford on Avon Community Campus – Phase 1 Consultation Updates: <ul style="list-style-type: none"> • Wiltshire Police • Wiltshire Fire & Rescue Service • NHS Wiltshire • Youth Advisory Group 	
8 Community Area Grants (<i>Pages 19 - 48</i>) i) Westwood with Iford Primary School Library requesting £2,000 towards stocking non-curriculum books and providing computer hardware and software for the library.	

	<ul style="list-style-type: none"> ii) Mrs Anastasia Thomas requesting £4,677 towards 'My Science Fair', a community science project involving the local primary schools. iii) Wiltshire Music Centre requesting £5,000 towards a Bruce Munro Light Sculpture for the foyer area of the Centre. iv) Bradford on Avon Development Trust requesting £600 towards a street display in Lamb Yard with information on the Historic Core Zone project. 	
9	<p>Understanding Autism (<i>Pages 49 - 52</i>)</p> <p>Emma Townsend - Commissioning and Contract Lead (Specialist Commissioning and Safeguarding Team), Wiltshire Council and Patti Harrison, Wiltshire Parent Carer Council.</p> <p>To increase public awareness of the condition.</p>	7.50pm
10	<p>Staverton Issues</p> <p>Simon Richardson - Staverton Parish Council.</p> <p>To report on any issues of concern within the village.</p>	8.10pm
11	<p>Traffic Survey of Holt and Bradford on Avon</p> <p>Allan Creedy - Head of Sustainable Transport, Wiltshire Council.</p> <p>To report on progress and headline findings from the Traffic Study of Bradford on Avon and Holt, held earlier this year.</p>	8.30pm
12	<p>Connecting Wiltshire - DVD Film (<i>Pages 53 - 54</i>)</p> <p>Allan Creedy - Head of Sustainable Transport, Wiltshire Council.</p> <p>To inform the Area Board of the programme to improve transport services and information in Wiltshire.</p>	
13	<p>Next Meeting Date</p> <ul style="list-style-type: none"> • Wednesday 8 January 2014 – venue to be confirmed. 	
14	Close	9.00pm



Cereal Partners UK Conference Facility
Staverton
Wiltshire
BA14 6PG

Wiltshire Council
 Where everybody matters



MINUTES

Meeting: BRADFORD ON AVON AREA BOARD
Place: Pratchett Room, County Hall, Trowbridge, BA14 8JN
Date: 23 October 2013
Start Time: 5:30pm
Finish Time: 5:45pm

Please direct any enquiries on these minutes to:

Kevin Fielding, Tel: 01249 706612 or (e-mail) kevin.fielding@wiltshire.gov.uk

Papers available on the Council's website at www.wiltshire.gov.uk

In Attendance:

Wiltshire Councillors

Cllr Rosemary Brown (Chairman), Cllr Trevor Carbin, Cllr Magnus Macdonald and Cllr Ian Thorn (Vice Chairman)

Wiltshire Council Officers

Peter Dunford – Community Area Manager
Kevin Fielding, Officer

Partners

Joceline Bury - BoACAN

Total in attendance: 7

<u>Agenda Item No.</u>	<u>Summary of Issues Discussed and Decision</u>
1	<p><u>Chairman's Welcome, Introduction and Announcements</u></p> <p>The Chairman welcomed those in attendance to the meeting.</p> <p>The Democratic Services Officer explained that the business of the meeting was to ratify any recommendations made at the 18 September meeting.</p> <p>The meeting of the 18 September had not been quorate as only two members of the Area Board were in attendance. The meeting had been able to take place with the members able to make recommendations, but no decisions were able to be made at that meeting. The members present were able to make recommendations which would then be ratified at a future meeting.</p>
2	<p><u>Apologies for Absence</u></p> <p>Apologies for absence were received from Jim Lynch – BoACAN.</p>
3	<p><u>Minutes</u></p> <p>Decision</p> <ul style="list-style-type: none"> • The minutes of the meetings held on the 19 June and 18 September 2013 were approved and signed as the correct records. • The minutes of the Bradford on Avon Community Area Transport Group meeting held on the 2 September 2013 were approved and signed as a correct record.
4	<p><u>Declarations of Interest</u></p> <p>There were no declarations of interest.</p>
5	<p><u>Ratification of any Recommendations made at the 18 September 2013 Area Board Meeting</u></p> <p>Decision</p> <p>a. The following Community Area Grants which were recommended for approval at the 18 September meeting were ratified:</p> <ul style="list-style-type: none"> • BoA Youth Advisory Group awarded £2,850 towards improvements at the Poulton Skate Ramps.

	<ul style="list-style-type: none"> • Winsley Parish Council awarded £4,000 towards a bus shelter at Bradford Road/ Dane Rise, Winsley. • Bradford on Avon Friends of Palestine awarded £3,000 towards a visit to Bradford by young Palestinian dancers. <p>b. The application submitted by Bradford on Avon Preservation Trust for the transfer of Nursery Field, Bradford on Avon Trust in accordance with Wiltshire Council’s Community Asset Transfer Policy, which was recommended for approval at the 18 September meeting was ratified.</p>
6	<p><u>Future Meeting Dates</u></p> <ul style="list-style-type: none"> • 20 November 2013 – Cereal Partners Conference Facility, Staverton.
7	<p><u>Close</u></p>

MINUTES

Meeting: BRADFORD ON AVON AREA BOARD
Place: St Laurence School, Ashley Rd, Bradford on Avon BA15 1DZ
Date: 18 September 2013
Start Time: 7.00 pm
Finish Time: 9.20 pm

Please direct any enquiries on these minutes to:

Kevin Fielding ,Telephone: 01249 706612 or (e-mail) kevin.fielding@wiltshire.gov.uk

Papers available on the Council's website at www.wiltshire.gov.uk

In Attendance:

Wiltshire Councillors

Cllr Magnus Macdonald, Cllr Trevor Carbin and Cllr John Thomson

Wiltshire Council Officers

Peter Dunford – Community Area Manager
Kevin Fielding – Democratic Services Officer
Parvis Khansari – Service Director Strategic Services
John Goodall – Associate Director, Public Health

Town and Parish Councillor

Bradford on Avon Town Council – Janet Repton
Holt Parish Council – Jane Grant
Limpley Stoke Parish Council – Simon Coombe
Westwood Parish Council – Allan Parker, Terry Biles & Ian Richardson
Wingfield Parish Council – P Furnell
Winsley Parish Council – Linda Lardner

Partners

Wiltshire Police – Acting Inspector James Brain
Wiltshire PCC – Kiran Kilgallen – Chief Executive, Office of Police & Crime
Commissioner

Total in attendance: 52

<u>Agenda Item No.</u>	<u>Summary of Issues Discussed and Decision</u>
1	<p><u>Chairman's Welcome & Introductions</u></p> <p>The Democratic Services Officer, (Kevin Fielding) welcomed everyone to St Laurence School, and advised that apologies had been received from both the Chairman and Vice Chairman of the Area Board.</p> <p>This meant that the meeting was not quorate as there were only two members in attendance. The meeting could still take place but no decisions could be made at the meeting. The members present could make recommendations which would then be ratified at a future meeting.</p> <p>The Democratic Services Officer therefore asked for one of the elected councillors present to propose a chairman for this meeting.</p> <p>Cllr Magnus Macdonald was proposed as the Chairman for the meeting.</p>
2	<p><u>Apologies for Absence</u></p> <p>Apologies were received from Cllr Rosemary Brown and Cllr Ian Thorn.</p>
3	<p><u>Minutes</u></p> <p>It was agreed that the minutes of the Bradford on Avon Area Board meeting held on 19 June 2013 and the minutes of the Bradford on Avon Community Area Transport Group meeting held on 2 September 2013 would be approved and signed off at the next quorate meeting of the Bradford on Avon Area Board.</p>
4	<p><u>Declarations of Interest</u></p> <p>There were no declarations of interest.</p>
5	<p><u>Chairman's Announcements and Updates</u></p> <p>The following Chairman's Announcements were included as part of the agenda pack were noted:</p> <ul style="list-style-type: none"> • Colonel Llewellyn Palmer Educational Charity inviting applications for funding to help schools, groups and individuals in Bradford on Avon. • Wiltshire Core Strategy consultation. • Pest Control update.

	<ul style="list-style-type: none"> • What Matters To You? Survey 2013. <p>The following Partner updates were noted:</p> <ul style="list-style-type: none"> • Wiltshire Police – Acting Inspector Brain. • Wiltshire Fire & Rescue Service.
6	<p><u>Grants and Funding</u></p> <p>The following Community Area Grants were approved pending ratification at the next quorate Bradford on Avon Area Board meeting:</p> <ul style="list-style-type: none"> • BoA Youth Advisory Group requesting £2,850 towards improvements at the Poulton Skate Ramps. • Winsley Parish Council requesting £4,000 towards a bus shelter at Bradford Road/ Dane Rise, Winsley or at an alternative location to be agreed by First Bus and the Wiltshire Council Passenger Transport Unit. • Bradford on Avon Friends of Palestine requesting £3,000 towards a visit to Bradford by young Palestinian dancers. • Wiltshire Global Education Centre requesting £1,350 towards a Global Spotlight Competition – (Note, that this grant application was withdrawn).
7	<p><u>Evaluation of Wiltshire 20 mph trial sites and Wiltshire Policy on 20 mph</u></p> <p>Councillor John Thomson - Deputy Leader and Cabinet Portfolio Holder for Highways, Streetscene and Broadband, Wiltshire Council and Parvis Khansari - Service Director Strategic Services, Wiltshire Council outlined the background to the Evaluation of Wiltshire 20 mph trial sites and the Wiltshire Policy on 20 mph speed limits and zones.</p> <p>The report was included in the agenda pack.</p> <p>Points made included:</p> <ul style="list-style-type: none"> • That Wiltshire Council set the speed limits but Central Government setting the guide lines for 20 mph limits. • There are 75 examples of 20 mph zones and limits in Wiltshire, including Salisbury city centre.

- 20 mph zones work extremely well in built up areas, housing developments, but are much less effective on open roads.
- Limits have 20mph signs, which are cheaper, whereas zones typically feature engineering works to calm the traffic.
- That Wiltshire Council would come back to the Area Boards when it had formulated its 20mph policy for local input as to areas that would benefit from 20mph zoning.

Points made from the floor included:

- That there had been positive feedback from pedestrians living in villages that had been part of the trial.
- That slowing down vehicles would create higher emissions, and conflict with trying to improve the air quality in Bradford on Avon.

Allan Parker, Chairman - Westwood Parish Council gave a short presentation on the Westwood experience of the 20mph trial.

Points made included:

- Villagers felt safer when using the roads in and around the village.
- There had been positive feedback from users of the virtual pavement.
- 45% of Westwood residents felt that the village was safer with a 20 mph speed limit in place.
- The project appeared to have had little project management, and was very ad hoc.
- It was unfortunate that Community Speed Watch had not been able to be utilised during the trial period.

Kieran Kilgallen – Chief Executive, Office of the Police and Crime Commissioner advised that the Community Speed Watch scheme had now been re-launched across Wiltshire with new resources, an automated system and 50 new cameras.

Questions raised from the floor included:

- Why was there no Police presence during the trial?
a. The 20mph scheme shouldn't need Police enforcement to operate successfully, leaving the Police free to better utilise their resources where

	<p><i>needed.</i></p> <p>The Chairman thanked Cllr Thomson, Parvis Khansari and Allan Parker for their input on this project.</p>
8	<p><u>Wingfield Parish Council - Request for reduction in speed limit from 40 to 30mph</u></p> <p>Cllr Magnus Macdonald outlined Wingfield Parish Council's request for reduction in speed limit from 40 to 30mph.</p> <p>Cllr John Thomson accepted a letter on behalf of Wiltshire Council from Wingfield Parish Council requesting a 30mph speed limit.</p> <p>Points made included:</p> <ul style="list-style-type: none"> • The Parish Council's requests that Wiltshire Council reduce the speed limit from 40mph to 30 mph had so far been un-successful. • That there had been several incidents on the B1389 due to the speed of vehicles. • Many of the points raised by the Wingfield Parish Council during a meeting with Mr David Thomas back in July of this year, were yet to be addressed. • It was stated in the meeting that David Thomas is currently working on a reply back to Wingfield PC, in reference to the Parish Council's outstanding points / questions raised. It was mentioned that he would also provide recommendations on how the B3109 could become safer. <p>Parvis Khansari - Service Director Strategic Services, Wiltshire Council advised that Wingfield does not meet the Department of Transport criteria for a 30mph speed limit, due to the density of housing that borders the B1389.</p> <p>Cllr John Thomson advised that this issue should be forwarded to the Community Area Transport Group for its consideration, Cllr Thomson could then be fed back its recommendations with a view to try and resolve the issue.</p> <p>Cllr Magnus Macdonald thanked Dave Thomas – Wiltshire Council, Highway Department for his ongoing help with this matter.</p>
9	<p><u>Questions to Councillor John Thomson</u></p> <p>Councillor John Thomson - Deputy Leader and Cabinet Portfolio Holder for Highways, Streetscene and Broadband, Wiltshire Council was in attendance to answer any questions.</p>

	<p>Questions raised included:</p> <ul style="list-style-type: none"> • How could more sustainable transport be implemented in Bradford on Avon? <ul style="list-style-type: none"> a. <i>Some 50% of bus routes are funded by Wiltshire Council, there certainly is a lack of funding from Central Government.</i> • What is happening with the rollout of Broadband by Wiltshire Council? <ul style="list-style-type: none"> a. <i>Wiltshire Council would be announcing in the near future plans for the next stage, with Council working with broadband providers to provide 95% broadband coverage. Wiltshire Council were challenging BT to release more information to speed the rollout up.</i> <p>The Chairman thanked Cllr Thomson.</p>
10	<p><u>Bradford on Avon Campus - Phase 1 Consultation</u></p> <p>Jonathon Brown – Chairman of the Bradford on Avon Shadow Campus Operations Board gave a brief update on the proposed Bradford on Avon Campus – Phase One consultation.</p> <p>Points made included:</p> <ul style="list-style-type: none"> • Meetings had taken place between the SCOB and service providers in the Bradford on Avon community area. • Consultations had started with local residents, with roadshow events planned and displays in the Library. St Laurence school pupils had also be canvassed for their views. • Consultations were also taking place with villages across the community area. • A web site had now been set up. <p>The Chairman thanked Jonathon Brown for his update.</p>
11	<p><u>Local Authority responsibilities for Public Health</u></p> <p>John Goodall – Associate Director, Public Health, Wiltshire Council presented a short DVD film that sought to highlight Local Authority responsibilities for Public Health.</p>

12	<p><u>Update on Joint Strategic Needs Assessment Community Profiles</u></p> <p>John Goodall – Associate Director, Public Health, Wiltshire Council outlined the The JSA for Wiltshire 2012-13 which was published in late 2012 on behalf of the Public Services Board (PSB).</p> <p>The CAJSAs had taken on board feedback from Councillors, officers, organisations and feedback from our community events (held in 2012) and would build on the existing document and include more information on changes; trends; qualitative survey data (such as the results from the What Matters to You survey 2013) and other primary research such as the Census 2011.</p> <p>The aim was to publish the CA JSAs at a second round of community events between January and April 2014. Officers have discussed these plans with the Chairs of the Area Boards meeting and also have met with Area Board managers.</p> <p>The date for the Bradford on Avon event has been provisionally set for Monday 3 February 2014 at St Laurence School.</p> <p>The Chairman thanked John Goodall for his presentation.</p>
13	<p><u>Community Asset Transfer - Nursery Field, Bradford on Avon</u></p> <p>The Area Board members were asked to consider an application submitted by Bradford on Avon Preservation Trust for the transfer of Nursery Field, Bradford on Avon Trust in accordance with Wiltshire Council's Community Asset Transfer Policy.</p> <p>A report was included in the agenda pack.</p> <p>Recommendation</p> <ul style="list-style-type: none"> • Members in attendance were minded to recommend approval of the transfer with ratification at the next quorate meeting of the Bradford on Avon Area Board.
14	<p><u>Next Meeting Date</u></p> <p>The next Bradford on Avon Area Board meeting would be held on Wednesday 20 November at Cereal Partners, Staverton.</p>

Agenda Item 7

Chairman's Announcements

Subject:	Carers' Small Grant Scheme
Weblink:	website
Further details available:	Maria Keel, Senior Commissioning and Contracts Officer Tel: 07500 099652 or email maria.keel@wiltshire.gov.uk

Carers' Small Grants Scheme

Do you have an idea for a project or activity to help unpaid carers in your community, but need funding?

I am pleased to announce the launch of the next round of our Carers Small Grants Scheme. Grants of up to £5,000 are available to get you started. The grants are available to groups and organisations (but not individuals) for projects and activities which can demonstrate that they make a tangible difference to the lives of unpaid carers of all ages in Wiltshire in one or more of the following ways:

- To give carers a break from their caring role
- To help carers learn a new skill which may increase their life chances and employability
- To help improve carers' physical or emotional health and well-being
- To reduce isolation
- To increase peer support
- To help carers' access to information, support and guidance

Match-funding is not required; however, these are one-off grants so applicants need to look for other sources of funding for the continuation of their project at the end of the funding period. (You can contact the Wiltshire and Swindon Community Foundation on 01380 729284 for advice on additional funding).

Funding will not be given for any project or activity which duplicates services already commissioned by Wiltshire Council.

The next deadline for applications is 30 November 2013 and applications can be downloaded from the Wiltshire Council [website](#).

Chairman's Announcements

Subject:	Wiltshire and Swindon State of the Environment report 2013
Officer Contact Details:	Jenny Hawley, Environmental Intelligence Officer at Wiltshire Wildlife Trust, tel: 01380 736 084 and email: jennyh@wiltshirewildlife.org
Weblink:	Wiltshire Intelligence Network Environment section: www.intelligencenetwork.org.uk/environment
Further details available:	Full report available online or in hard copy and more detailed data on the Wiltshire Intelligence Network.

Summary of announcement:

The State of the Environment report 2013 for Wiltshire and Swindon was published in September 2013 by Wiltshire Wildlife Trust, on behalf of Link2Nature, the Local Nature Partnership for Wiltshire and Swindon (www.link2nature.org.uk). The project is funded by Natural England, Public Health Wiltshire and Wiltshire Council.

This new report provides a strategic assessment of Wiltshire's environment. It forms the basis of the Wiltshire JSA and Community Area JSA environment sections.

The report gives an overview of the state of our natural habitats and wildlife, and the services that these provide (such as clean air, water, food and green space). It highlights the drivers of environmental change, including population growth, development, farming, consumption of natural resources and climate change.

More detailed data is available in the environment section of the Wiltshire Intelligence Network. This website gives easy access to up-to-date environmental information and online links to a wide range of sources.

Further resources on the state of the environment in each Community Area will be available on the Wiltshire Intelligence Network in late 2012 and early 2013, in time for the publication of the Community Area JSAs 2013-14. Maps are already available showing environmental designations (such as protected wildlife sites) and agri-environment schemes in each Community Area.

Any questions, comments or requests for further information can be addressed to Jenny Hawley (contact details above).

Bradford on Avon Area Board, 20 November 2103

Chairman's Announcement

Bradford on Avon Community Campus - Phase 1 Consultation

Bradford on Avon is getting a new campus – and we want YOU to tell us what you'd like to see there.

Campuses are happening in towns across Wiltshire, bringing together and improving all kinds of public services – council, police, fire and rescue, health, sport and leisure, community facilities – where people can get at them easily.

This is just the first stage of the campus development, when we (a group of local volunteers called the Community Operations Board COB) outline the proposal to you, and you share your ideas with us.

We will look at what you tell us, and share the results with everybody. Then, we'll work together to decide what is most important to most people. Finally, we'll create a blueprint for Your Campus, and present it to Wiltshire Council.

So please tell us your views about where and how services should be delivered and how they can be improved by going to www.yourcampus.me and clicking on the 'What's Important to You' button.

If you run or belong to a group, club or organisation, please register it and give us your group's views by clicking on the 'Register Your Group.'

Further information on the Campus programme is available here
<http://www.yourcampus.me/about-campuses>

You can also see how campuses are progressing in other community areas across Wiltshire here
<http://www.wiltshire.gov.uk/communityandliving/communitycampuses.htm>

The Bradford on Avon Campus consultation closes on the 30th November 2013 so don't delay and have your say now!



Bradford-on-Avon Area Board November 2013

Neighbourhood Policing current NPT Priorities:

Up-to-date information about Neighbourhood Policing Teams (NPTs) including profiles, priorities and forthcoming community consultation events can be found on the Wiltshire Police website www.wiltshire.police.uk

Team News:

The NPT continues to tackle crime and local community priorities. The NPT remains under the supervision of PS James Brain and PS Jim Suter.

The team for Bradford-on-Avon remain as:

PC Martin Annetts, PC Lee Pelling, PCSO Joe Leeds and PCSO Andrew MacLachlan.

Overview

At the foot of this report the performance data is available which covers a 12 month period to September 2013. I have drawn out key aspects to add some context:

- 1 Performance is good across the beats however one crime set stands out which continues, at this time, to be the primary focus of activity. That is burglary.

Although since these figures were published, a number of key arrests have been made and the number of such crimes in decreasing, it remains a priority. Operation Magpie continues across the Sector and brings together various teams within the Force to tackle burglary.

There is 24/7 commitment to offer reassurance and crime prevention within the community as well as disruption of those where intelligence is available for committing crime. Community intelligence is vital in combating crime and criminals, so any information (or suspicions) needs to be shared with the police.

Key prevention messages remain as:

- Secure your property
- Mark your property
- Record details of identifiable property and/or take photos of your belongings.

This gives the police more of a chance to identify stolen property.

The website www.immobilise.com can be used to record these details and may even prevent offenders taking the item in the first place.

- 2 Please don't forget the Twitter addresses that you are welcome to follow to get updates on local policing:

@LisetteHarvey
 @SgtJimSuter
 @Sgt2517Brain

- 3 Finally, I wish to thank the community for its interaction with the team and Wiltshire Police. We are all part of the community and we need to work together to prevent crime and disorder. The continued support is greatly appreciated.

4

Lisette Harvey
Sector Commander
25 October 2013

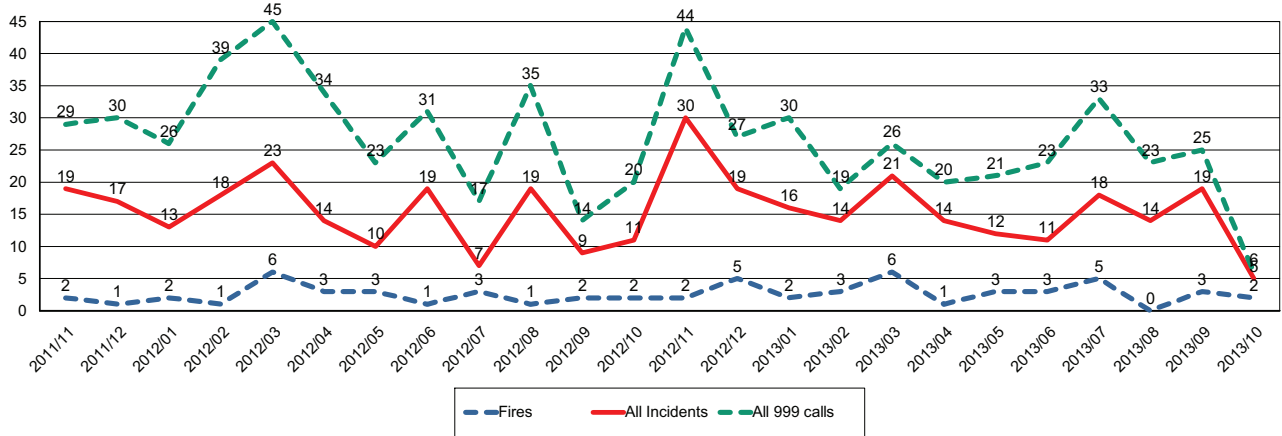
EA11 Bradford on Avon Town	Crime				Detections*	
	12 Months to September 2012	12 Months to September 2013	Volume Change	% Change	12 Months to September 2012	12 Months to September 2013
Victim Based Crime	335	353	+18	+5.4%	15%	14%
Domestic Burglary	31	45	+14	+45.2%	26%	7%
Non Domestic Burglary	20	32	+12	+60.0%	0%	9%
Vehicle Crime	53	58	+5	+9.4%	4%	9%
Criminal Damage & Arson	79	75	-4	-5.1%	4%	1%
Violence Against The Person	55	53	-2	-3.6%	42%	32%
ASB Incidents (YTD)	152	123	-29	-19.1%		
EA12 Bradford on Avon Rural	Crime				Detections*	
	12 Months to September 2012	12 Months to September 2013	Volume Change	% Change	12 Months to September 2012	12 Months to September 2013
Victim Based Crime	211	230	+19	+9.0%	12%	8%
Domestic Burglary	13	29	+16	+123.1%	31%	10%
Non Domestic Burglary	35	47	+12	+34.3%	9%	2%
Vehicle Crime	44	38	-6	-13.6%	0%	3%
Criminal Damage & Arson	31	26	-5	-16.1%	10%	12%
Violence Against The Person	38	27	-11	-28.9%	32%	33%
ASB Incidents (YTD)	77	76	-1	-1.3%		



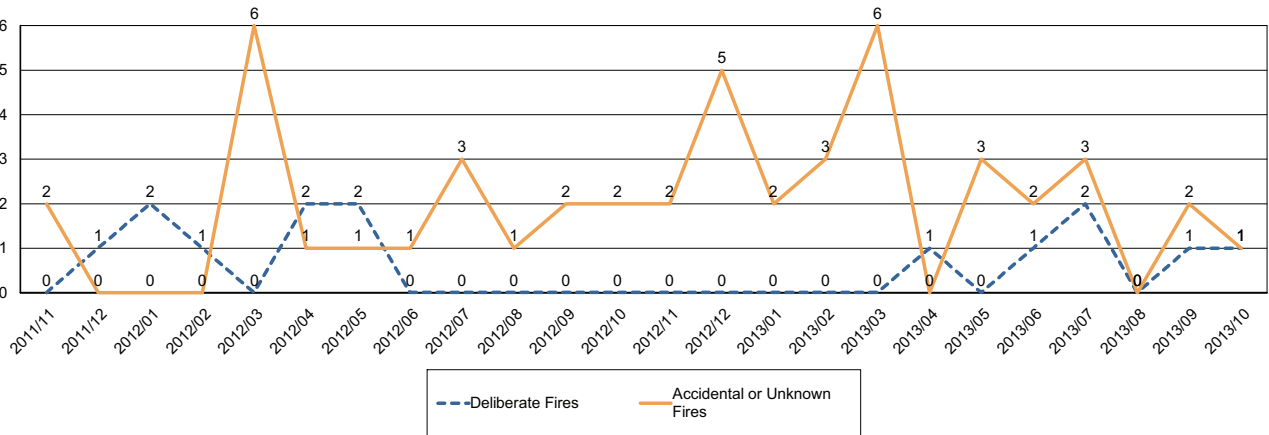
Report for Bradford on Avon Area Board

The following is an update of Fire and Rescue Service activity up to and including October. It has been prepared using the latest information and is subject to change.

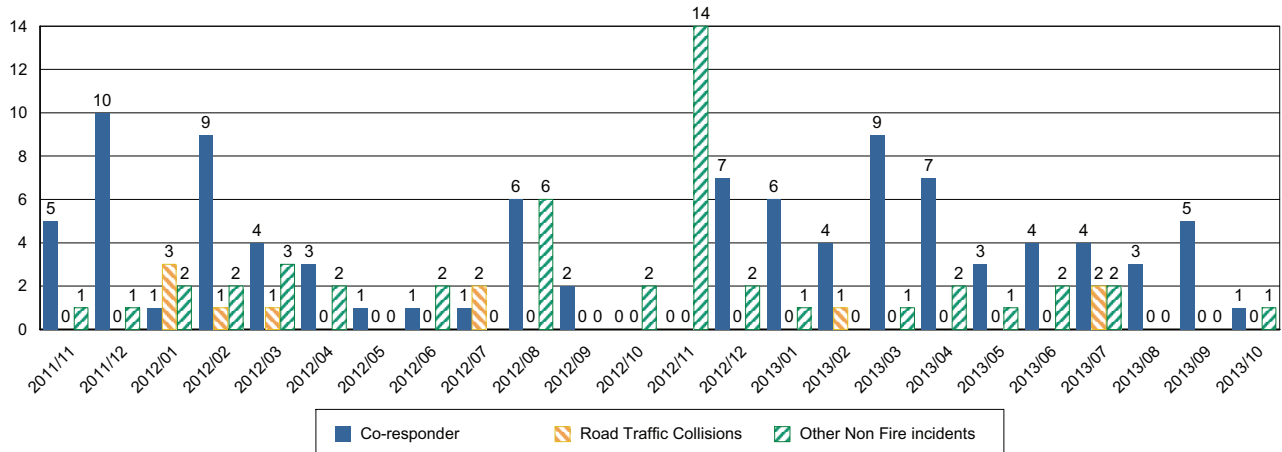
Incidents and Calls



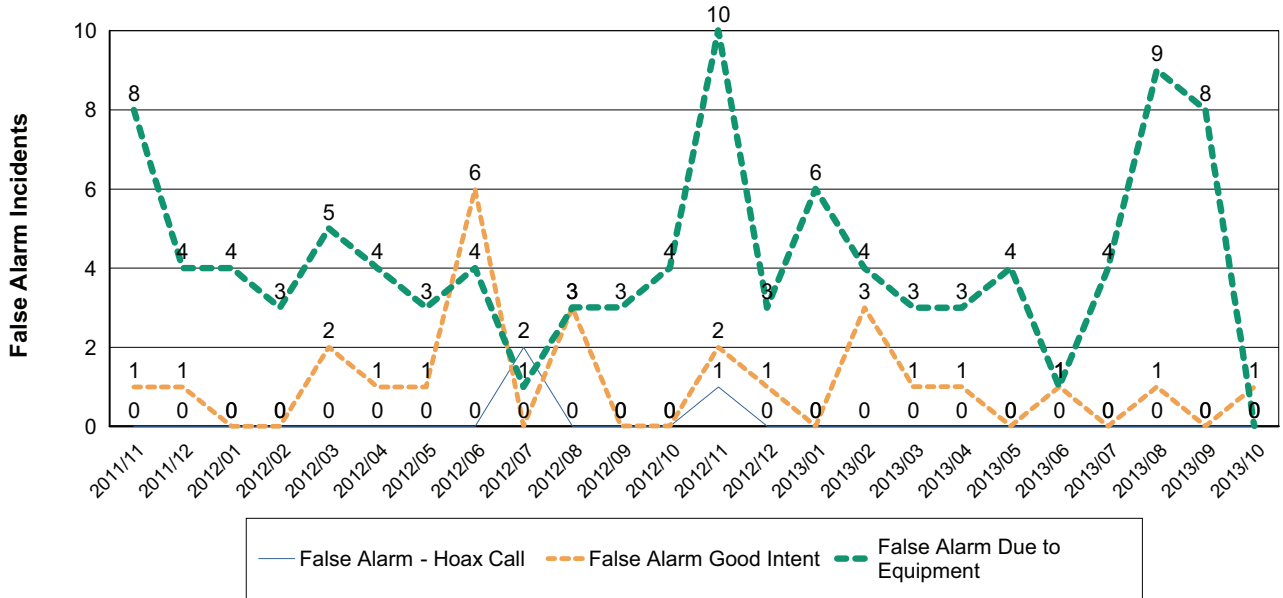
Fires by Cause



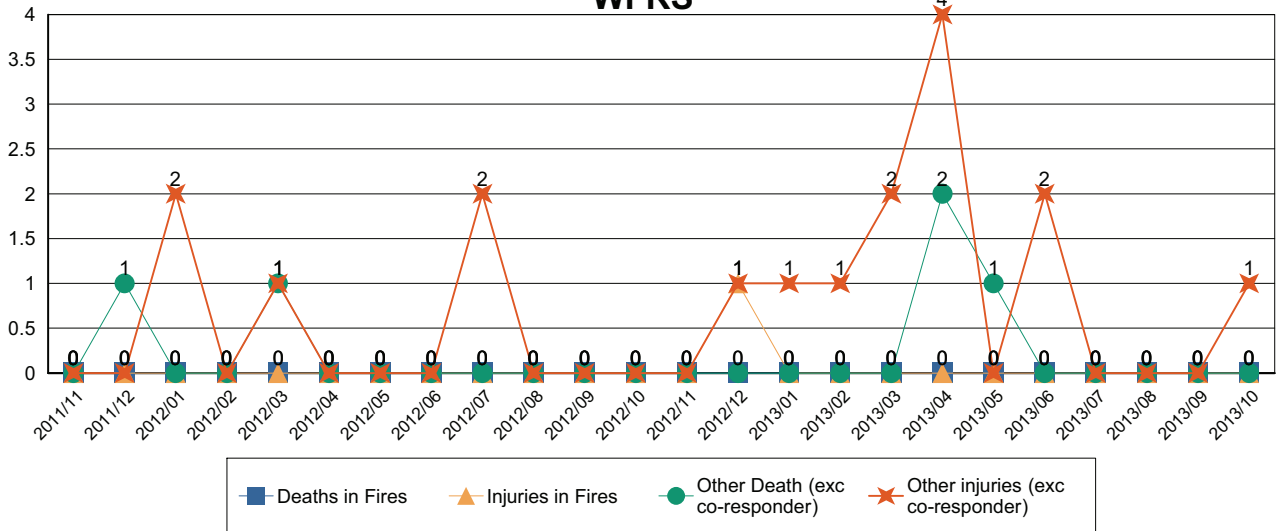
Non-Fire incidents attended by WFRS



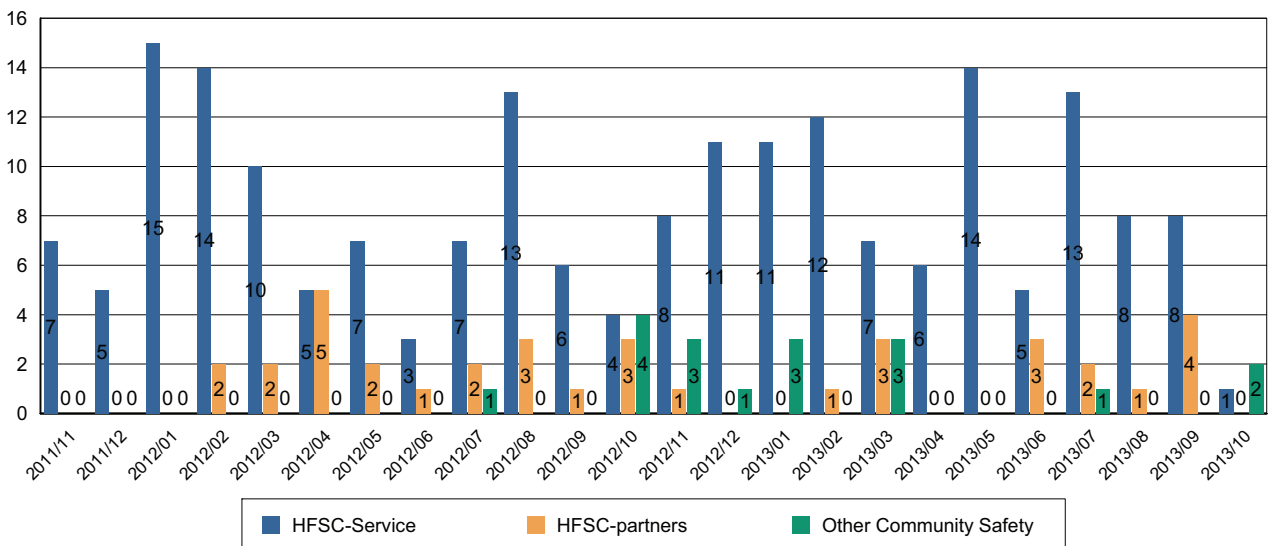
Number of False Alarm Incidents



Death & Injuries in incidents attended by WFRS



Home Fire Safety Checks and other domestic safety



Comments and Interventions overleaf

Report to	Bradford on Avon Area Board
Date of Meeting	20 November 2013
Title of Report	Community Area Grants

Purpose of Report

To ask Councillors to consider four applications seeking 2013/14 Community Area Grant funding:

- i) Westwood with Iford Primary School requesting £2,000 towards stocking the school library with new non-curriculum books**

- ii) Anastasia Thomas requesting £4,677 towards the My Science Fair 2014 event**

- iii) Wiltshire Music Centre requesting £5,000 towards a Bruce Munro Light Sculpture in the foyer of the Music Centre**

- iv) Bradford on Avon Development Trust requesting £687 towards an Historic Core Zone Street Display**

1. Background

- 1.1 Area Boards have authority to approve Community Area Grants under powers delegated to them by the Deputy Leader and Cabinet member for Community Services (27 February 2010). Under the Scheme of Delegation Area Boards must adhere to the Area Board Grants Guidance for funding.
- 1.2 In accordance with the Scheme of Delegation, any decision of an Area Board that is contrary to the funding criteria and/or the officer's recommendation would need to demonstrate that the application in question has a wider community benefit, and give specific reasons as to why this should justify an exception to the criteria.
- 1.3 In accordance with the Area Board Grants Guidance, officers are required to provide recommendations in their report, however the decision to support applications and to what level is made by Wiltshire Councillors on this Area Board.
- 1.4 Bradford on Avon Area Board has been allocated a budget in 2013/2014 of £ £39,942 capital and £11,133 revenue expenditure for community grants, community partnership core funding and councillor led initiatives.
- 1.5 It has been decided that paper copies of funding applications will no longer appear as part of the agenda in an attempt to reduce the volume of paper used. However, the application forms will be available on the Wiltshire Council website and hard copies will be available upon request.
- 1.6 The funding criteria and application forms are available on the Council's website (www.wiltshire.gov.uk/areaboards) and paper versions are available from the Community Area Manager.

Background documents used in the preparation of this Report	<ul style="list-style-type: none">• Community Area Grant Application Pack 2011/12• Bradford on Avon Community Area Plan• Wiltshire Local Area Agreement
--	--

2 Main Considerations

- 2.1 Councillors will need to be satisfied that grants awarded in the 2013/14 year are made to projects that can realistically proceed within a year of the award being made.
- 2.2 There will be 5 rounds of funding during 2013/14, this being the third.

3 Environmental & Community Implications

3.1 Community Area Grants will contribute to the continuance and/or improvement of cultural, social and community activity and wellbeing in the community area, the extent and specifics of which will be dependent upon the individual project.

4 Financial Implications

4.1 Awards must fall within the Area Boards budget allocated to the Bradford on Avon Area Board.

4.2 If grants are awarded in line with recommendations, Bradford on Avon Area Board will have a balance of approximately £ 24, 680 capital funding and £ zero revenue funding remaining in the grants budget for the 2013/14 financial year.

5 Legal Implications

5.1 There are no specific legal implications related to this report.

6 HR Implications

6.1 There are no specific HR implications related to this report.

7 Equality and Inclusion Implications

7.1 Community Area Grants give all local community and voluntary groups an equal opportunity to receive funding towards community based projects and schemes.

7.2 Implications relating to individual grant applications are outlined within section 8 – “Officer Recommendations”.

8 Officer Recommendations

Ref	Applicant	Project proposal	Funding requested
8.1	Westwood with Iford Primary School	Stocking the school library with non core-curriculum books and computer hardware and software	£2,000 capital

8.1.1 This application meets the community area grant criteria for 2012/13.

8.1.2 The application demonstrates a link to the Bradford on Avon Community Plan and Wiltshire Local Area Agreement through its support to education and community facilities.

8.1.3 In Autumn 2012 a new library was created within the school using funds from capital funding allocated to the school by Wiltshire Council but funding was not available to stock the library with new non-curriculum books. The purpose of the project is to allow the library at Westwood With Iford Primary School to be fully stocked with non-curriculum books, and to install computer hardware and software to enable the school to run a fully functioning lending library. This will also be made available to local home educated children, and to the local community nursery (Westwood Nursery).

8.1.4 The library restocking cannot be funded from the school budget, which has limited funds available for curriculum books, and no funds available for non-curriculum books. It has been partially funded from fundraising by the Friends of Westwood School (FoWs) group (Charity No.1034875), who have so far contributed £1500 towards fittings and books for the library, and who have agreed to match fund £2000 towards the project from their reserves. However, as a small rural school, the funds available to the FoWs group are limited, as the majority of fundraising necessarily falls within a relatively small catchment area. The school is currently significantly underfunded (educating 103 children on a budget for 87 children (Sept 2013)), and relies heavily on the FoWs fundraising in many aspects of non-curriculum spending. This means that FoWs reserve funds cannot extend to cover all the demands made of it. Support from the Community Area Grant would therefore release the FoWs limited remaining reserves to enable spending on several other projects within the school.

8.1.5 The beneficiaries will be infant and primary school aged children within the Westwood, Iford and Avoncliff area. The intention is not to restrict library access only to pupils from the school but to make access available to local children generally. The investment in library hardware and software will enable this wider inclusive offering to be fulfilled. Currently reading facilities within the school and the village are extremely limited. Access to the local library in Bradford on Avon (or Trowbridge) requires a car journey (which may not be feasible for parents outside school hours), or public transport (the bus linking Westwood and Bradford on Avon/Trowbridge does not enable a return journey to be made outside school hours). At the moment, the school library is around 40% stocked with books, funded by donations of books and also funding from the Friends of Westwood School (FoWs). The shelves are therefore fairly empty, and this does not encourage children to use the library area, and means that it is difficult to ensure that children are able to access new reading material. As there is currently no easy way of tracking book loans, the existing fairly small library has a relatively high rate of loss of books, meaning that the book stock is consistently under pressure. Through use of specialist Library hardware and software, we aim to protect the investment in new books by ensuring that loans can be actively tracked, and books recovered quickly to enable increased use. It is shown that ready access to books and reading material increases child literacy significantly, and the school hopes to incorporate the library facility into the ethos of the school and the wider village community. As a result it is planned that visiting the school library will become an accepted and normal part of local children's everyday life.

8.1.6 The aim of the project is to improve the literacy of local children, and to encourage and foster a positive attitude towards reading generally. This is of course a long term aim,

and success will be difficult to quantify. However the school will be able to monitor improvements in literacy generally within the school pupils, and will use the library as one tool (amongst others) to achieve that improvement. The Library software will also enable the school to analyse usage (both for pupils and non-pupils), and to see if further promotion of the library is needed both internally and externally.

8.1.4 Matching funding of £ 2,000 towards the project costs has been fund raised by the Friends of Westwood School. It is expected that funds to maintain the project will not be necessary after initial set up. Any new books in the future can be financed by the FoWs group, or from the school budget if available. Ongoing licence costs for the library software will be paid from the school budget, and maintenance of the library PC hardware will fall within the school's existing IT maintenance contract.

8.1.5 Officers consider that, while the project is worthy in itself and the school is obviously operating on limited budgets and has fundraised towards the costs, the benefits of the project will accrue predominantly to the school and not sufficiently to the wider community. Furthermore the granting of support to this project may set a precedent for many other schools in the community area to seek funding for similar purposes, which the grant scheme will be unable to fulfill.

Officers recommend that the project to stock the Westwood with Iford School library with non core-curriculum books and computer hardware and software is refused as the wider community benefits of the project are not demonstrated

Ref	Applicant	Project proposal	Funding requested
8.2	Anastasia Thomas	My Science Fair 2014	£4,677 revenue

8.2.1 This application meets the community area grant criteria for 2012/13, although is a supplementary application for a project already funded by a youth grant from the board so could be regarded as 'double funding'.

8.2.2 The application demonstrates a link to the Bradford on Avon Community Plan and Wiltshire Local Area Agreement through its support for extra curricular learning and community engagement.

8.2.3 My Science Fair is a community science project led by parent volunteers that encourages science & technology engagement for all the family in a way that is accessible, fun and sustainable at home. Every child gets to shine and discover the rewards of exploring the world from their unique point of interest. This year with Wiltshire Music Centre we have added a special theme of exploring the relationship between science and music, which we hope broadens engagement and highlights

insightful commonalities of the two. My Science Fair has three elements - a competition; interactive workshops /displays; and performances

8.2.4 My Science Fair is led by parent volunteers to encourage children and families to explore their world through science ages 5-11 take part in the competition. This year we are working with our local Wiltshire Music Centre with a special theme exploring the relationship between science and music. My Science Fair project meets the priorities of the Bradford on Avon Area Board through by providing accessible scientific learning (out of the classroom). We want to inspire childrens' interest at a young age self-esteem and confidence grows through pride in presenting their own work in public, for families and friends. It creates informal family learning parents, teachers and children will take part in workshops and supporting children to do their science projects. Community support for the competition and event is growing. In 2013 children and families recruited from six local schools took part with 45 competition entries. Over 300 people, young and old attended the event, attracting BBC Wiltshire radio who broadcast live and interviewed young participants. For 2013/14 we have Wiltshire Music Centre's support and even more partners to draw in children and families who would not normally take part.

8.2.5 AIMS: The My Science competition encourages children to discover the creative and rewarding nature of scientific exploration by completing a research project of their choice. Children benefit from a different learning experience and gain interest and confidence through designing and researching their own experiment, presenting their findings at an exhibition at the My Science Fair. The My Science competition encourages children and families to question, experiment and share their findings. The childrens' projects, which take several months to prepare, are central to the experience.

8.2.6 BENEFICIARIES: My Science Fair event March 2014 hosted at Wiltshire Music Centre will attract 450 parents and families for competition displays, workshops, interactive demonstrations and performances; The Science competition (for 5 to 11 year olds) aims to attract 60 entries from children; Six outreach Science Club sessions / School Assemblies to support harder to reach children to take part and help them enter the competition and do their own experiments; 15 St Laurence students BTEC Music Technology Students will volunteer with STEM Ambassadors and music technology specialists to support the My Science Fair event in March 2014; 350 children and adults attending four drop-in advice science workshops at the British Royal Literary Scientific Institute between September 2013 to January 2014; 30 children from the Bradford on Avon and local schools perform at My Science Fair with OAE professional musicians and scientist from Plymouth University.

8.2.6 Our parent group seek funding from a variety of places each year, for each project

including company sponsorship and in kind support for elements such as prizes or free displays and outreach workshops. Our possibilities for future funding are also enhanced by the range of new partners we are now connected to including two universities, the BRLSI and Stem Ambassadors. We intend to continue to work in partnership with Wiltshire Music Centre who want to grow the event to be a much larger and sustainable Music and Science Festival for an adult and youth audience as well as primary level age. Wiltshire Music Centre seek funding for each project - this is largely dependent on the content as it changes to suit the needs of diverse and growing participants and audiences (informed by monitoring and evaluation).

8.2.7 Match funding contributions towards total project costs of £10,277 are being sought or have been secured from the Colonel Llewellyn Palmer Educational Charity, Co-op Community Awards and Awards for All. A sum of £1,004 from the Wiltshire Council Youth Participatory budgeting event was also awarded by the Area Board in March 2013.

8.2.8 Officers note that the applicant has previously applied successfully to fund the same project, albeit from a separate fund held by the Area Board, and consider that a second grant would represent double funding of the same project. This grant application is for revenue funding, however the Community Grant scheme is now predominantly a capital scheme and the Area Board has already spent its limited revenue funding allocation for 2013/14.

Officers recommend that funding for the My Science Fair project is refused as Wiltshire Council has previously contributed a grant to the same project and is unable to contribute further due to the revenue budget for 2013/14 being fully allocated

Ref	Applicant	Project proposal	Funding requested
8.3	Wiltshire Music Centre	Bruce Munro Light Sculpture in the foyer of the Music Centre	£5,000 capital

8.3.1 This application meets the community area grant criteria for 2012/13.

8.3.2 The application demonstrates a link to the Bradford on Avon Community Plan and Wiltshire Local Area Agreement through its support for cultural and tourism development.

8.3.3 WMC puts on 100 live music concerts a year and is open to the public 80 hours a week for music rehearsal and performance and around 15 different weekly activities. Over 40% of its audience and users are from the Bradford on Avon area

and it contributes around 1m to the local economy every year. As part of a major project of capital improvement to the Centre 75% funded by an Arts Council grant, the Trustees want to commission an iconic piece of public art for the foyer. Discussions have been held with Bruce Munro, the internationally renowned light artist who has been so inspired by the building and the music that he has designed a permanent light sculpture for the foyer and agreed to create it at cost. Unlike his temporary work for the Holbourne Museum in Bath and Salisbury Cathedral, this will be a permanent public sculpture available for the residents of Bradford on Avon to enjoy.

8.3.4 WMC's project to commission and install a piece of public art in one of Bradford on Avon's major public buildings will provide a lasting public benefit to the residents of the town and its surrounding area by providing a new major attraction in the town thus extending economic benefit in the town and protecting employment opportunities, raising the profile of Bradford and encouraging more visits to the Music Centre adding to the beneficial lifestyle supported by the town. The light sculpture called Rhythm and Blues will be installed in the foyer of the Music Centre and will be available for free public visits 80 hours a week. Bruce Munro is a light artist of international renown and the sculpture will be one of his few permanent pieces on display in the South West. This will provide a significant additional attraction for residents, tourists and visitors to Bradford on Avon thus bringing more spending to the local economy and more profile for the town. Wiltshire Council recognised that the visitor economy by volume and value is driven significantly by arts and culture in Wiltshire which are regarded as major assets. It is also accepted that the cultural sector offers a degree of resilience to the local economy by attracting visitors from outside. This new art work will add to Bradford's contribution to the cultural economy. Maintaining profile in the local region is critical for Bradford on Avon - particularly with the World Heritage site of Bath with its significant cultural and heritage offering only 8 miles away. This project will help to give the iconic WMC building the physical 'wow factor' which will put it on its pedestal and match the physical experience for visitors with the musical performance experience inside the auditorium. The building was designed by award winning architects Feilden Clegg Bradley who are currently working on the re-development of the Southbank. This is an opportunity to celebrate the achievements of Bradford and the Music Centre with an iconic light sculpture. The benefits of the project also extend to increasing the sustainability of the Music Centre and its users (40% are from Bradford) and its 100 volunteers (mainly from Bradford) who give their time and expertise to maintaining the programme and activities on offer. The Centre attracts audiences of over 21,000 each year as well as another 40,000 visits from people of all ages taking part in music performance, rehearsals and other activities. It is a much loved and used institution which gets involved in many other local initiatives - the Olympic celebrations in 2012, the community production of Noyes Fludde in 2013 and the new community music festival Bradford Roots. We want to continue to grow visitor and audience numbers to increase and develop the sustainability of this incredible local resource and the light sculpture will help this significantly.

8.3.5 The overall project is for capital improvements including auditorium sound system upgrade, upgrade to the lighting and furniture in the foyer, upgrade to the external lighting and signage of the building and a small office extension. Overall the project will cost £538,000 of which £371,000 has been awarded in an Arts Council grant, £134,000 has been raised from other sources and £33,000 remains still to raise.

8.3.6 Officers believe that the project will benefit the standing of this major attraction which serves the Bradford on Avon community area and beyond. The funding contribution is a minor part of the overall package for this piece of public art and so leverage is very good. Councillors will need to consider the level of support that is appropriate to support this project in the light of other demands on the budget.

Officers recommend that a reduced amount of £ 3,000 capital funding is contributed to the Bruce Munro Light Sculpture in the foyer of the Wiltshire Music Centre

Ref	Applicant	Project proposal	Funding requested
8.4	Bradford on Avon Development Trust	Historic Core Zone Street Display	£687 capital

8.4.1 This application meets the community area grant criteria for 2012/13.

8.4.2 The application demonstrates a link to the Bradford on Avon Community Plan and Wiltshire Local Area Agreement through its support to community networking and cohesion.

8.4.3 The preparation and erection of a permanent exterior display showing the extent and purpose of the Historic Core Zone, its timeframe and progress in order to inform and to seek to maintain public support for the scheme as it evolves in the years ahead

8.4.4 The Historic Core Zone is a Wiltshire Council Highways project designed to improve the safety and ease of passage for pedestrians in Bradford on Avon. The project evolved from a major consultation and community exercise carried out in the town and supported by Wiltshire Council in 2009/10. The first phase of the project will be introduced shortly, as well as the decluttering of the streets with the introduction of a controlled parking zone in the town centre. The ambition is to restore the balance between people and vehicles in favour of people. Given the unavoidable delay there has been between acceptance of the project by Wiltshire Council in 2009 and today, there is considerable public ignorance of the project. The risk is that as the detailed design of each stage of the Zone is consulted on, there is confusion among the public about what the Zone is intended to do, and what it's not intended to do, and how it's going to progress. The Town Council-led HCZ Action Group (which

includes officers from Highways) has agreed with a Development Trust proposal that a large permanent display be placed in the town showing the extent of the scheme and allowing updates to be posted, including timetables. This will allow townspeople to stay abreast of what is happening with the scheme and will help maintain public support. It is likely that this display will need to be maintained over several years as the scheme progresses, so a robust weatherproof display cabinet is needed.

8.4.5 The Development Trust working with the Town Council and the HCZ Action Group will ensure that the display board is kept up-to-date and in good order.

8.4.6 Bradford on Avon Town Council on 22 October 2013 agreed to contribute 50% of project costs. Since beneficiaries include residents across the Community Area, it is considered appropriate to request 50% support also from the Area Board. PLEASE NOTE: the amounts indicated in the budget are maximum figures including VAT. It is possible that we will be able to fix the display panel to a privately-owned wall, rather than excavating postholes. We will have an answer to this by the time of the November Area Board meeting and, if we can use a wall rather than posts, the amount required will reduce by approx £500 to a maximum of £874.00. We are actively pursuing this as a preferred option, but it is dependent on obtaining approval from third parties.

8.4.7 Officers consider that this project will benefit the communications around the Historic Core Zone, a major initiative for the town but one which has very little public visibility and understanding at present. The costs of the street display, shared with the Town Council, are considered to be reasonable.

Officers recommend approval of a £ 687 capital funding allocation towards the Historic Core Zone Street Display in Lamb Yard

Appendices:	Grant applications from: Westwood with Iford Primary School Anastasia Thomas Wiltshire Music Centre Bradford on Avon Development Trust
--------------------	---

No unpublished documents have been relied upon in the preparation of this report.

Report Author	Peter Dunford, Community Area Manager Tel: 01225 713060 E-mail peter.dunford@wiltshire.gov.uk
----------------------	--

Grant Applications for Bradford on Avon on 20/11/2013

ID	Grant Type	Project Title	Applicant	Amount Required
314	Community Area Grant	Wiltshire Music Centre - Bruce Munro Light Sculpture	Wiltshire Music Centre	£5000
309	Community Area Grant	Westwood With Iford Primary School Library	Friends of Westwood with Iford School	£2000
339	Community Area Grant	My Science Fair 2014	My Science Fair	£4677
343	Community Area Grant	Historic Core Zone street display	Bradford on Avon Development Trust	£687

ID	Grant Type	Project Title	Applicant	Amount Required
314	Community Area Grant	Wiltshire Music Centre - Bruce Munro Light Sculpture	Wiltshire Music Centre	£5000

Submitted: 04/10/2013 13:52:18

ID: 314

Current Status: Application Appraisal

To be considered at this meeting:

20/11/2013 Bradford on Avon

1. Which type of grant are you applying for?

Community Area Grant

2. Amount of funding required?

£501 - £5000

3. Are you applying on behalf of a Parish Council?

No

4. If yes, please state why this project cannot be funded from the Parish Precept

5. Project title?

Wiltshire Music Centre - Bruce Munro Light Sculpture

6. Project summary:

WMC puts on 100 live music concerts a year and is open to the public 80 hours a week for music rehearsal and performance and around 15 different weekly activities. Over 40% of its audience and users are from the Bradford on Avon area and it contributes around Â£1m to the local economy every year. As part of a major project of capital improvement to the Centre 75% funded by an Arts Council grant, the Trustees want to commission an iconic piece of

public art for the foyer. Discussions have been held with Bruce Munro, the internationally renowned light artist who has been so inspired by the building and the music that he has designed a permanent light sculpture for the foyer and agreed to create it at cost. Unlike his temporary work for the Holbourne Museum in Bath and Salisbury Cathedral, this will be a permanent public sculpture available for the residents of Bradford on Avon to enjoy.

7. Which Area Board are you applying to?

Bradford on Avon

Electoral Division

8. What is the Post Code of where the project is taking place?

BA15 1DZ

9. Please tell us which theme(s) your project supports:

Arts, crafts and culture

If Other (please specify)

10. Finance:

10a. Your Organisation's Finance:

Your latest accounts:

03/2013

Total Income:

£646362

Total Expenditure:

£645966

Surplus/Deficit for the year:

£396

Free reserves currently held:

(money not committed to other projects/operating costs)

£632

Why can't you fund this project from your reserves:

The Centre's total reserves are made up of restricted funds representing the value of the building itself and specific funds for education projects. There are also designated reserves which represent funds designated by the trustees to cover major funding loss business risks to ensure that the Centre could carry on operations. The Trustees have also allocated £30,000 from these funds to the general capital improvement scheme.

We are a small community group and do not have annual accounts or it is our first year:

10b. Project Finance:

Total Project cost		£39701		
Total required from Area Board		£5000		
Expenditure (Itemised expenditure)	£	Income (Itemised income)	Tick if income confirmed	£
Design & creation of artwork	30000	Discount Bruce Munro	yes	10000
Project planning & co-ordination	5000	Public donations received	yes	8000
		Outset Trust application		10000
Technical installation	3000	Elephant Trust application		2450
Cating & delivery	4000	Public donations sought		11500
Insurance	1340			
Irrecoverable VAT	3610			
Total	£46950			£41950

11. Have you or do you intend to apply for a grant from another area board within this financial year?

No

12. If so, which Area Boards?**13. Please tell us WHO will benefit and HOW they will benefit from your project benefit your local community?**

WMC's project to commission and install a piece of public art in one of Bradford on Avon's major public buildings will provide a lasting public benefit to the residents of the town and its surrounding area by providing a new major attraction in the town thus extending economic benefit in the town and protecting employment opportunities, raising the profile of Bradford and encouraging more visits to the Music Centre adding to the beneficial lifestyle supported by the town. The light sculpture called Rhythm and Blues will be installed in the foyer of the Music Centre and will be available for free public visits 80 hours a week. Bruce Munro is a light artist of international renown and the sculpture will be one of his few permanent pieces on display in the South West. This will provide a significant additional attraction for residents, tourists and visitors to Bradford on Avon thus bringing more spending to the local economy and more profile for the town. Wiltshire Council recognised that the visitor economy by volume and value is driven significantly by arts and culture in Wiltshire which

are regarded as major assets. It is also accepted that the cultural sector offers a degree of resilience to the local economy by attracting visitors from outside. This new art work will add to Bradford's contribution to the cultural economy. Maintaining profile in the local region is critical for Bradford on Avon - particularly with the World Heritage site of Bath with its significant cultural and heritage offering only 8 miles away. This project will help to give the iconic WMC building the physical "wow" factor which will put it on its pedestal and match the physical experience for visitors with the musical performance experience inside the auditorium. The building was designed by award winning architects Feilden Clegg Bradley who are currently working on the re-development of the Southbank. This is an opportunity to celebrate the achievements of Bradford and the Music Centre with an iconic light sculpture. The benefits of the project also extend to increasing the sustainability of the Music Centre and its users (40% are from Bradford) and its 100 volunteers (mainly from Bradford) who give their time and expertise to maintaining the programme and activities on offer. The Centre attracts audiences of over 21,000 each year as well as another 40,000 visits from people of all ages taking part in music performance, rehearsals and other activities. It is a much loved and used institution which gets involved in many other local initiatives - the Olympic celebrations in 2012, the community production of Noye's Fludde in 2013 and the new community music festival Bradford Roots. We want to continue to grow visitor and audience numbers to increase and develop the sustainability of this incredible local resource and the light sculpture will help this significantly.

14. How will you monitor this?

WMC keeps monitors all visits to the Music Centre for all concerts and all activities. We will keep accurate records of all visits to see the light sculpture and will do an annual survey so that Bradford on Avon will have a good estimate of the overall impact of having the sculpture in Bradford.

15. If your project will continue after the Wiltshire Council funding runs out, how will you continue to fund it?

This capital project will be lit and maintained on an on-going basis from the resources of the Music Centre.

16. Is there anything else you think we should know about the project?

The overall project is for capital improvements including auditorium sound system upgrade, upgrade to the lighting and furniture in the foyer, upgrade to the external lighting and signage of the building and a small office extension. Overall the project will cost £538,000 of which £371,000 has been awarded in an Arts Council grant, £134,000 has been raised from other sources and £33,000 remains still to raise.

17. DECLARATION

Supporting information - Please confirm that the following documents will be available to inspect upon request:

Quotes:

yes I will make available on request 1 quote for individual project costs over £500 & 2 quotes for project costs over £1000 (Individual project costs are listed in the expenditure section above)

Project/Business Plan:

yes I will make available on request a **project or business plan** (including estimates) for projects where the **total project cost** (as declared in the financial section above) exceeds £50,000 (tick only when total project cost exceeds £50,000).

Accounts:

yes I will make available on request the organisation's **latest accounts**

Constitution:

yes I will make available on request the organisation's Constitution/Terms of Reference etc.

Policies and procedures:

yes I will make available on request the necessary and relevant policies and procedures such as Child Protection, Safeguarding Adults, Public Liability Insurance, Access audit, Health & Safety and Environmental assessments.

Other supporting information (Tick where appropriate, for some project these will not be applicable):

yes I will make available on request evidence of ownership of buildings/land

yes I will make available on request any other form of licence or approval for this project has been received prior to submission of this grant application.

And finally...

yes The information on this form is correct, that any award received will be spent on the activities specified.

309	Community Area Grant	Westwood With Iford Primary School Library	Friends of Westwood with Iford School	£2000
-----	----------------------	--	---------------------------------------	-------

Submitted: 02/10/2013 13:46:53

ID: 309

Current Status: Application Appraisal

To be considered at this meeting:

20/11/2013 Bradford on Avon

1. Which type of grant are you applying for?

Community Area Grant

2. Amount of funding required?

£501 - £5000

3. Are you applying on behalf of a Parish Council?

No

4. If yes, please state why this project cannot be funded from the Parish Precept

5. Project title?

Westwood With Iford Primary School Library

6. Project summary:

In Autumn 2012, a new library was created within the school, using funds from capital funding allocated to the school by Wiltshire Council but funding was not available to stock the library with new non-curriculum books. The purpose of the project is to allow the library at Westwood With Iford Primary School to be fully stocked with non-curriculum books, and to install computer hardware and software to enable the school to run a fully functioning lending library. This will also be made available to local home educated children, and to the local community nursery (Westwood Nursery).

7. Which Area Board are you applying to?

Bradford on Avon

Electoral Division

Winsley and Westwood

8. What is the Post Code of where the project is taking place?

BA15 2BY

9. Please tell us which theme(s) your project supports:

Children & Young People

Arts, crafts and culture

Heritage, history and architecture

Sport, play and recreation

If Other (please specify)

10. Finance:

10a. Your Organisation's Finance:

Your latest accounts:

08/2013

Total Income:

£5473

Total Expenditure:

£2549

Surplus/Deficit for the year:

£2924

Free reserves currently held:

(money not committed to other projects/operating costs)

£924

Why can't you fund this project from your reserves:

The library restocking cannot be funded from the school budget, which has limited funds available for curriculum books, and no funds available for non-curriculum books. It has been partially funded from fundraising by the Friends of Westwood School (FoWs) group (Charity No.1034875), who have so far contributed Â£1500 towards fittings and books for the library, and who have agreed to match fund Â£2000 towards the project from their reserves. However, as a small rural school, the funds available to the FoWs group are limited, as the majority of fundraising necessarily falls within a relatively small catchment area. The school is currently significantly underfunded (educating 103 children on a budget for 87 children (Sept 2013)), and relies heavily on the FoWs fundraising in many aspects of non-curriculum spending. This means that FoWs reserve funds cannot extend to cover all the demands made of it. Support from the Community Area Grant would therefore release the FoWs limited remaining reserves to enable spending on several other projects within the school.

We are a small community group and do not have annual accounts or it is our first year:

10b. Project Finance:

Total Project cost		£4000		
Total required from Area Board		£2000		
Expenditure (Itemised expenditure)	£	Income (Itemised income)	Tick if income confirmed	£
Books	2500	Friends of Westwood School (Charity)	yes	2000
Library PC hardware and software	1500			
Total	£4000			£2000

11. Have you or do you intend to apply for a grant from another area board within this financial year?

No

12. If so, which Area Boards?

Bradford on Avon

13. Please tell us WHO will benefit and HOW they will benefit from your project benefit your local community?

The beneficiaries will be infant and primary school aged children within the Westwood, Iford and Avoncliff area. The intention is not to restrict library access only to pupils from the school but to make access available to local children generally. The investment in library hardware and software will enable this wider inclusive offering to be fulfilled. Currently reading facilities within the school and the village are extremely limited. Access to the local

library in Bradford on Avon (or Trowbridge) requires a car journey (which may not be feasible for parents outside school hours), or public transport (the bus linking Westwood and Bradford on Avon/Trowbridge does not enable a return journey to be made outside school hours). At the moment, the school library is around 40% stocked with books, funded by donations of books and also funding from the Friends of Westwood School (FoWs). The shelves are therefore fairly empty, and this does not encourage children to use the library area, and means that it is difficult to ensure that children are able to access new reading material. As there is currently no easy way of tracking book loans, the existing fairly small library has a relatively high rate of loss of books, meaning that the book stock is consistently under pressure. Through use of specialist Library hardware and software, we aim to protect the investment in new books by ensuring that loans can be actively tracked, and books recovered quickly to enable increased use. It is shown that ready access to books and reading material increases child literacy significantly, and the school hopes to incorporate the library facility into the ethos of the school and the wider village community. As a result it is planned that visiting the school library will become an accepted and normal part of local children's everyday life.

14. How will you monitor this?

The aim of the project is to improve the literacy of local children, and to encourage and foster a positive attitude towards reading generally. This is of course a long term aim, and success will be difficult to quantify. However the school will be able to monitor improvements in literacy generally within the school pupils, and will use the library as one tool (amongst others) to achieve that improvement. The Library software will also enable the school to analyse usage (both for pupils and non-pupils), and to see if further promotion of the library is needed both internally and externally.

15. If your project will continue after the Wiltshire Council funding runs out, how will you continue to fund it?

It is expected that funds to maintain the project will not be necessary after initial set up. Any new books in the future can be financed by the FoWs group, or from the school budget if available. Ongoing licence costs for the library software will be paid from the school budget, and maintenance of the library PC hardware will fall within the school's existing IT maintenance contract.

16. Is there anything else you think we should know about the project?

The capital cost associated with construction of the library space has already been met.

17. DECLARATION

Supporting information - Please confirm that the following documents will be available to inspect upon request:

Quotes:

yes I will make available on request 1 quote for individual project costs over £500 & 2 quotes for project costs over £1000 (Individual project costs are listed in the expenditure section above)

Accounts:

yes I will make available on request the organisation's **latest accounts**

Constitution:

yes I will make available on request the organisation's Constitution/Terms of Reference etc.

Policies and procedures:

yes I will make available on request the necessary and relevant policies and procedures such as Child Protection, Safeguarding Adults, Public Liability Insurance, Access audit, Health & Safety and Environmental assessments.

Other supporting information (Tick where appropriate, for some project these will not be applicable):**And finally...**

yes The information on this form is correct, that any award received will be spent on the activities specified.

339	Community Area Grant	My Science Fair 2014	My Science Fair	£4677
-----	----------------------	----------------------	-----------------	-------

Submitted: 16/10/2013 10:34:04

ID: 339

Current Status: Application Appraisal

To be considered at this meeting:

20/11/2013 Bradford on Avon

1. Which type of grant are you applying for?

Community Area Grant

2. Amount of funding required?

£501 - £5000

3. Are you applying on behalf of a Parish Council?

No

4. If yes, please state why this project cannot be funded from the Parish Precept**5. Project title?**

My Science Fair 2014

6. Project summary:

My Science Fair is a community science project led by parent volunteers that encourages science & technology engagement for all the family in a way that is accessible, fun and sustainable at home. Every child gets to shine and discover the rewards of exploring the world from their unique point of interest. This year with Wiltshire Music Centre we have added a special theme of exploring the relationship between science and music, which we hope broadens engagement and highlights insightful commonalities of the two. My Science

Fair has three elements - a competition; interactive workshops /displays; and performances.

7. Which Area Board are you applying to?

Bradford on Avon

Electoral Division

8. What is the Post Code of where the project is taking place?

8. BA151DZ

9. Please tell us which theme(s) your project supports:

Children & Young People

Arts, crafts and culture

Inclusion, diversity and community spirit

Technology & Digital literacy

Other

If Other (please specify)

Science

10. Finance:

10a. Your Organisation's Finance:

Your latest accounts:

04/2013

Total Income:

£513

Total Expenditure:

£525

Surplus/Deficit for the year:

£-12

Free reserves currently held:

(money not committed to other projects/operating costs)

£0

Why can't you fund this project from your reserves:

We are a small community group and do not have annual accounts or it is our first year:

10b. Project Finance:

Total Project cost	£10277		
Total required from Area Board	£4677		
Expenditure	£	Income	Tick if income £

(Itemised expenditure)		(Itemised income)	confirmed	
My Science Fair event including (1) demonstrations (2) OAE workshops (3) Pre-event outreach Staffing and admin support for outreach and Fair event (Wiltshire Music Centre)	5680	Youth Grant Bradford Area Board	yes	1000
Marketing and printing	1272	Col. William Llewellen Palmer Education Fund		1800
Wiltshire Music Centre Hire	750	Cooperative Community Grant		1450
Box Office Ticket Booking	100	Awards For All		1350
Community film of competition & event	475			
Total	£10277			£5600
11. Have you or do you intend to apply for a grant from another area board within this financial year?				
No				
12. If so, which Area Boards?				
Bradford on Avon				
13. Please tell us WHO will benefit and HOW they will benefit from your project benefit your local community?				
My Science Fair is led by parent volunteers to encourage children and families to explore their world through science “ ages 5-11 take part in the competition. This year we are working with our local Wiltshire Music Centre with a special theme exploring the relationship between science and music. My Science Fair project meets the priorities of the Bradford on Avon Area Board through by providing accessible scientific learning (out of the classroom). We want to inspire children’s interest at a young age “ self-esteem and confidence grows through pride in presenting their own work in public, for families and friends. It creates informal family learning “ parents, teachers and children will take part in				

workshops and supporting children to do their science projects. Community support for the competition and event is growing. In 2013 children and families recruited from six local schools took part with 45 competition entries. Over 300 people, young and old attended the event, attracting BBC Wiltshire radio who broadcast live and interviewed young participants. For 2013/14 we have Wiltshire Music Centre's support and even more partners to draw in children and families who would not normally take part. SPECIFIC BENEFICIARIES INCLUDE:

- My Science Fair event March 2014 hosted at Wiltshire Music Centre will attract 450 parents and families for competition displays, workshops, interactive demonstrations and performances;
- The Science competition (for 5 – 11 year olds) – we aim to attract 60 entries from children;
- Six outreach Science Club sessions / School Assemblies to support “harder to reach” children to take part and help them enter the competition and do their own experiments;
- 15 St Laurence students BTEC Music Technology Students will volunteers with STEM Ambassadors and music technology specialists to support the My Science Fair event in March;
- 350 children and adults attending four drop in advice science workshops at the British Royal Literary Scientific Institute reaching September 2013 to January 2014;
- 30 children from the Bradford on Avon and local schools perform at My Science Fair with OAE professional musicians and scientist from Plymouth University.

The following outlines each part of the project and what we aim to achieve: MY SCIENCE COMPETITION encourages children to discover the creative and rewarding nature of scientific exploration by completing a research project of their choice. Children benefit from a different learning experience and gain interest and confidence through designing and researching their own experiment, presenting their findings at an exhibition at the My Science Fair. The My Science competition encourages children and families to question, experiment and share their findings. The children's projects, which take several months to prepare, are central to the experience. INTERACTIVE WORKSHOPS & DISPLAYS: the event also includes interactive demos, games and performances to inspire and promote engagement in science, music and engineering for all ages including: St Laurence B-Tec pupils from Music and Science Departments, Drop in Music and Evolution workshops with the Mead Primary School and OAE (Orchestra in the Age of Enlightenment; a dynamic chemistry demonstration (Bristol Chem LabS), Lego Racers workshop (Dr. Aydin Nassehi, Mechanical Engineering, University of Bath), 3D printing demonstration (Mechanical Eng, University of Bath), Replacement joints research display (Bath University), Bloodhound Super Sonic Car display, The Institution of Engineering & Technology interactive demos, Raspberry Pi workshop. This year we have expert support from Wiltshire Music Centre. Workshops will be led by Orchestra of the Age of Enlightenment (OAE) entitled “A Celebration of Life on Earth”. Children, parents and families will use music as a means to explore evolution and the building blocks of life working with professional musicians and scientists at the My Science Fair event. These interdisciplinary workshops include:

- Human and Instrumental Evolution - How do we use our breath and our body to create sounds on our instruments? Why are some instruments now extinct? What impact does music have on our brains? Pupils will explore how wind and string instruments have developed over the centuries.
- What makes us what we are? - Science session on how we as humans have evolved and how we might evolve in the future.
- Instrument making workshop or make a shoe box cell - Make a drum, an oboe, a double bass or a horn - how would you improve your instrument by using different materials? How does this relate back to human development and evolution.
- Build a Beast by random selection – Children and adults work with scientists to create a flying, swimming or walking animal by random selection. Which beast will survive best and why?

14. How will you monitor this?

With our parent volunteers and the support of Wiltshire Music Centre we will carry out rigorous monitoring and evaluation – qualitative and quantitative. We have experienced professional staff and volunteers on board who will engage with the project and support children, families, teachers, scientists and musicians who take part to make sure there is maximum benefit for all. We will gather feedback through a variety of formal and information methods (questionnaires, feedback sessions, one to one interview and discussions) informal – sound bite quotes and stories that will bring alive and capture the stories from the My Science Fair project. We will prepare a full report sharing these with the Area Board.

15. If your project will continue after the Wiltshire Council funding runs out, how will you continue to fund it?

Our parent group seek funding from a variety of places each year, for each project including company sponsorship and in kind support for elements such as prizes or free displays and outreach workshops. Our possibilities for future funding are also enhanced by the range of new partners we are now connected to including two universities, the BRLSI and Stem Ambassadors. We intend to continue to work in partnership with Wiltshire Music Centre who want to grow the event to be a much larger and sustainable Music and Science Festival – for an adult and youth audience as well as primary level age. Wiltshire Music Centre seek funding for each project - this is largely dependent on the content as it changes to suit the needs of diverse and growing participants and audiences (informed by monitoring and evaluation).

16. Is there anything else you think we should know about the project?

17. DECLARATION

Supporting information - Please confirm that the following documents will be available to inspect upon request:

Quotes:

yes I will make available on request 1 quote for individual project costs over £500 & 2 quotes for project costs over £1000 (Individual project costs are listed in the expenditure section above)

Accounts:

yes I will make available on request the organisation's **latest accounts**

Constitution:

yes I will make available on request the organisation's Constitution/Terms of Reference etc.

Policies and procedures:

yes I will make available on request the necessary and relevant policies and procedures such as Child Protection, Safeguarding Adults, Public Liability Insurance, Access audit, Health & Safety and Environmental assessments.

Other supporting information (Tick where appropriate, for some project these will not be applicable):

And finally...

yes The information on this form is correct, that any award received will be spent on the activities specified.

343	Community Area Grant	Historic Core Zone street display	Bradford on Avon Development Trust	£687
-----	----------------------	-----------------------------------	------------------------------------	------

Submitted: 17/10/2013 14:29:00

ID: 343

Current Status: Application Appraisal

To be considered at this meeting:

20/11/2013 Bradford on Avon

1. Which type of grant are you applying for?

Community Area Grant

2. Amount of funding required?

£501 - £5000

3. Are you applying on behalf of a Parish Council?

No

4. If yes, please state why this project cannot be funded from the Parish Precept

BoA Town Council will respond 22 Oct to a request for 50% of the cost. Since beneficiaries include residents across the Community Area, it is considered appropriate to request 50% support also from the CA. PLEASE NOTE:: the amounts indicated in the budget below are maximum figures including VAT. It is possible that we will be able to fix the display panel to a privately-owned wall, rather than excavating postholes. We will have an answer to this by the time of the November Area Board meeting and, if we can use a wall rather than posts, the amount required will reduce by approx Â£500 to a maximum of Â£874.00. We are actively pursuing this as a preferred option, but it is dependent on obtaining approval from third parties.

5. Project title?

Historic Core Zone street display

6. Project summary:

The preparation and erection of a permanent exterior display showing the extent and purpose of the Historic Core Zone, its timeframe and progress “ in order to inform and to seek to maintain public support for the scheme as it evolves in the years ahead.

7. Which Area Board are you applying to?

Bradford on Avon

Electoral Division

Bradford on Avon South

8. What is the Post Code of where the project is taking place?

BA15 1JX

9. Please tell us which theme(s) your project supports:

Economy, enterprise and jobs
Health, lifestyle and wellbeing
Heritage, history and architecture
Safer communities
Transport and roads

If Other (please specify)

10. Finance:

10a. Your Organisation's Finance:

Your latest accounts:

03/2012

Total Income:

£17102

Total Expenditure:

£16928

Surplus/Deficit for the year:

£174

Free reserves currently held:

(money not committed to other projects/operating costs)

£173

Why can't you fund this project from your reserves:

Insufficient funds.

We are a small community group and do not have annual accounts or it is our first year:

10b. Project Finance:

Total Project cost		£1374		
Total required from Area Board		£687		
Expenditure (Itemised expenditure)	£	Income (Itemised income)	Tick if income confirmed	£
Coker outdoor panel	592	BoA Town Council		687

Coker posts for panel	463	
Delivery for both	68	
Artwork for poster	0	
Cost of A0 print	54	
Est for fixing	200	
Total	£1377	£687

11. Have you or do you intend to apply for a grant from another area board within this financial year?

No

12. If so, which Area Boards?

Bradford on Avon

13. Please tell us WHO will benefit and HOW they will benefit from your project benefit your local community?

The Historic Core Zone is a Wiltshire Council Highways project designed to improve the safety and ease of passage for pedestrians in Bradford on Avon. The project evolved from a major consultation and community exercise carried out in the town and supported by WC in 2009-10. The first phase of the project will be introduced shortly, as well as the decluttering of the streets with the introduction of a controlled parking zone in the town centre. The ambition is to restore the balance between people and vehicles in favour of people. Given the unavoidable delay there has been between acceptance of the project by Wiltshire Council in 2009 and today, there is considerable public ignorance of the project. The risk is that as the detailed design of each stage of the Zone is consulted on, there is confusion among the public about what the Zone is intended to do, and what it's not intended to do, and how it's going to progress. The Town Council-led HCZ Action Group (which includes officers from Highways) has agreed with a Development Trust proposal that a large permanent display be placed in the town showing the extent of the scheme and allowing updates to be posted, including timetables. This will allow townspeople to stay abreast of what is happening with the scheme and will help maintain public support. It is likely that this display will need to be maintained over several years as the scheme progresses, so a robust weatherproof display cabinet is needed.

14. How will you monitor this?

The Development Trust working with the Town Council and the HCZ Action Group will ensure that the display board is kept up-to-date and in good order.

15. If your project will continue after the Wiltshire Council funding runs out, how will you continue to fund it?

This requires one-off funding. Apart from being kept clean, ongoing maintenance is not expected.

16. Is there anything else you think we should know about the project?

See above re: Historic Core Zone.

17. DECLARATION

Supporting information - Please confirm that the following documents will be available to inspect upon request:

Quotes:

yes I will make available on request 1 quote for individual project costs over £500 & 2 quotes for project costs over £1000 (Individual project costs are listed in the expenditure section above)

Accounts:

yes I will make available on request the organisation's **latest accounts**

Constitution:

yes I will make available on request the organisation's Constitution/Terms of Reference etc.

Policies and procedures:

yes I will make available on request the necessary and relevant policies and procedures such as Child Protection, Safeguarding Adults, Public Liability Insurance, Access audit, Health & Safety and Environmental assessments.

Other supporting information (Tick where appropriate, for some project these will not be applicable):

And finally...

yes The information on this form is correct, that any award received will be spent on the activities specified.

‘Understand autism’

Wiltshire Area Boards 2012/13

“Treat me the way they would like to be treated. Take into account my disability but remember me and my rights” (Wiltshire resident)

Introduction – What is autism?

Autism is a lifelong condition that affects how a person communicates with, and relates to other people and the world around them.

Autism is a spectrum condition, which means that, while all people with autism share certain difficulties, their condition will affect them in different ways.

The three main areas of difficulty which all people with autism share are sometimes known as the 'triad of impairments'. People have difficulties with:

1. social communication (e.g. difficulty with both verbal and non-verbal language, interpreting comments very literally, while thinking that people always mean exactly what they say)
2. social interaction (e.g. difficulty recognising or understanding other people's emotions and feelings, and expressing their own, which can make it hard to fit in socially)
3. social imagination (e.g. difficulty understanding and predicting other people's thoughts or behaviour and making sense of abstract ideas or situations outside of the immediate daily routine).

“The complexities of communication with people with autism are more than just a noisy room and speaking plainly” (Wiltshire resident)

Why are we going to area boards?

“they feel alone and alienated as people will often give them a wide berth”

(Wiltshire resident)

1. It can be hard to create awareness of autism as people with the condition do not 'look' disabled: parents of children with autism often say that other people simply think their child is naughty; while adults find that they are misunderstood. We would therefore like to share how autism affects individuals in Wiltshire so there is more understanding about the condition.
2. We have worked with a lot of local people with autism and their families to form a plan about how changes will be made. We would like to share this with you and see where your local area can support any improvements.

Why this area is important?

- **Autism is not uncommon**

It is estimated that 1 in every 100 people have autism and therefore in Wiltshire, we estimate that over 4,500 individuals are affected by the condition.

In Wiltshire, we know about (a little over) one thousand children and adults with the condition. Many of these people will also have a learning disability or mental health problem (autism, in itself, is neither).

We therefore believe that there are over 3,500 people in Wiltshire with autism who are unknown and may not get any support from other means.

This may well be appropriate as many people with autism can live relatively independent lives, however, because of the hidden nature of the condition, many people have also said that they find it difficult to get the right understanding and support, at the right time, from the same local services as everyone else.

We think that this could affect around 2000 in Wiltshire who have a form of autism (aspergers or high functioning autism) which is 'hidden' but nevertheless, may still struggle in life.

Very often, without low level natural and community support or understanding, these individuals tend to come to the attention of statutory services later on in life; this is usually at crisis point which has a negative impact on the individual and tends to be much more intensive and costly.

“Bewildered, not knowing where to turn” (Wiltshire resident)

“Prevention and support is much better than trying to pick up pieces afterwards” (Wiltshire resident)

- **Poor outcomes**

People with autism tend to have significantly poorer outcomes than others. As an example, national research shows that only 15% of adults with autism have a job. In comparison, the employment rate for disabled people, as a whole, is 48% indicating the low rates. This is despite the fact that many people with autism have unique skills and abilities that can help a business thrive (ie. problem solving skills, attention to retail, ability to retain detailed factual knowledge, excellent memory, technical abilities etc).

“Use of careful planning, strategy and therapeutic relationships can steer them through this [work] successfully developing their self awareness and ability to cope” (Wiltshire resident)

- **The Autism Act 2009 places duties on local areas**

“It seems that there is the assumption that at 18, all problems cease”

(Wiltshire resident)

In March 2010, the first ever strategy for improving the lives of adults with autism in England was published.

This strategy set out a number of key actions and recommendations which the government decided were the most important:

1. Making sure that more people understand about autism.
2. Making it easier for adults to get a diagnosis of autism. A diagnosis is when a doctor tells someone that they have autism.
3. Making it easier for adults with autism to choose how they live, and get the help that they need to do this.
4. Helping adults with autism to find jobs.
5. Helping local councils and health services to write plans so that the adults with autism who live in their area get the help that they need.

If you would like to find out more detail about what the strategy says, please follow this link: www.autism.org.uk/dhstrategy

The Wiltshire Autism Partnership

To help Wiltshire plan how to make these key priorities happen, a 'Wiltshire Autism Partnership' meet five times per year. This group includes people with autism, parent/ carers and professionals from different teams, agencies and organisations.

The group have done a lot of work to consult with local people. They have developed a strategy and are now finalising a plan detailing how the changes will be made. To view these documents, please visit:

<http://www.wiltshire.gov.uk/healthandsocialcare/disabilities.htm>

How your area board can help?

“Awareness that certain groups in our communities are more sensitive and vulnerable.....gives me faith that this can be extended to those on the autistic spectrum” (Wiltshire resident)

To promote more understanding and acceptance about the nature of autism in the local area: improved recognition, awareness and minor adjustments in the community would alone, contribute significantly. We would therefore welcome the opportunity to hear your views and ideas for improvements as the success of this work will be limited if there is a 'standalone' approach.

Useful websites

- <http://www.wiltshire.gov.uk/healthandsocialcare/disabilities.htm>
- <http://www.autism.org.uk/>

Contacts

For further information about the autism work please contact the disabilities commissioning team on 01225 718559 or email: disabilities@wiltshire.gov.uk

If you are a carer or person with autism (or think you may have autism) and feel that you may need some help, please contact 0300 456 0111 and someone will be able to tell you about the process of having an assessment to see if you are eligible for support.

You can do your bit by considering your travel options before making a journey.

Could you car share?

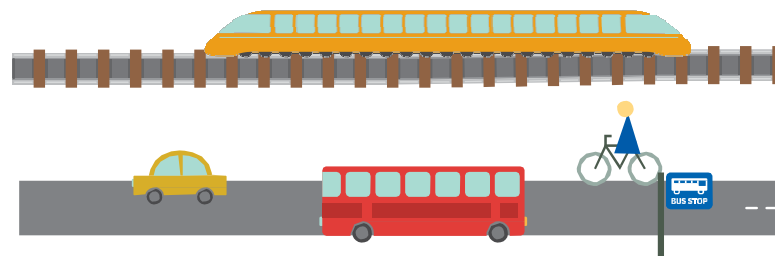
Maybe there's someone near you who would like to share the commute and give you someone to chat to. You can find them using the car share providers on our website. Also, your employer might have a scheme in place already – ask them!

What about trying the train?

We're working hard with the rail operators to improve walking, cycling and bus routes to stations. The train can be more cost-effective than driving, and you can work or relax by reading a book or the paper while you travel.

Could you walk or cycle there?

We are publishing more and more walking and cycling maps. These can be used for leisure or to help you find shortcuts you may not have known about that could help you spend less time in vehicles. Our travel shift calculator can also help you see how much you can benefit from changing how you get from A to B.



Perhaps you've already been making changes to your travel for personal, financial, or environmental reasons. Perhaps you're seeing the benefits to your waistline, pocket, or enjoying using green spaces. Or maybe you'd like to get involved in setting up a new car share group, bike club, or a walk to work event.

Please get in touch so we can pass your story on to others and help inspire people to travel more sustainably.

Over the coming months we will be communicating any new developments through our website, as well as through our Facebook and Twitter channels.

Look out for updates, and keep in touch with us on:



Connecting Wiltshire
Travel made simple

Wiltshire Council
Where everybody matters

7471 design: dave 0114 221 0378 Printed on paper from sustainable forests.



www.connectingwiltshire.co.uk



We're all about making travel simple. We provide information that is simple to understand and simple to use. We want to help you find ways to travel that save you time or money, improve your well-being and benefit the local environment.

As a rural county, Wiltshire is not always easy to get around using public transport, so people tend to use cars. Connecting Wiltshire has been set up to make it easier to use public transport – not just by improving the services and routes, but with things like cycle parking in stations and new footpaths. In this way we can help to reduce the amount of traffic on the roads by helping people find simpler and more cost-effective ways to travel.

Connecting Wiltshire is funded by Wiltshire Council with money from the government's Local Sustainable Transport Fund.

This money is being used for:

- Our new website, www.connectingwiltshire.co.uk
- Providing better transport information and services
- Improving transport facilities – parking, walking, bus and cycling access to stations
- A new rail service for Melksham

At www.connectingwiltshire.co.uk you will find:

- Information on all your travel options across the county
- A journey planner and travel shift calculator
- How your choice of transport can benefit you and the environment
- Helpful tips on how small changes can make a big difference
- Timetables and route information
- Parking information for around Wiltshire

